

AUCTION

Saturday • June 4th, 2016 • 10:00 am

21.67 ACRES FROSLEY PROPERTY

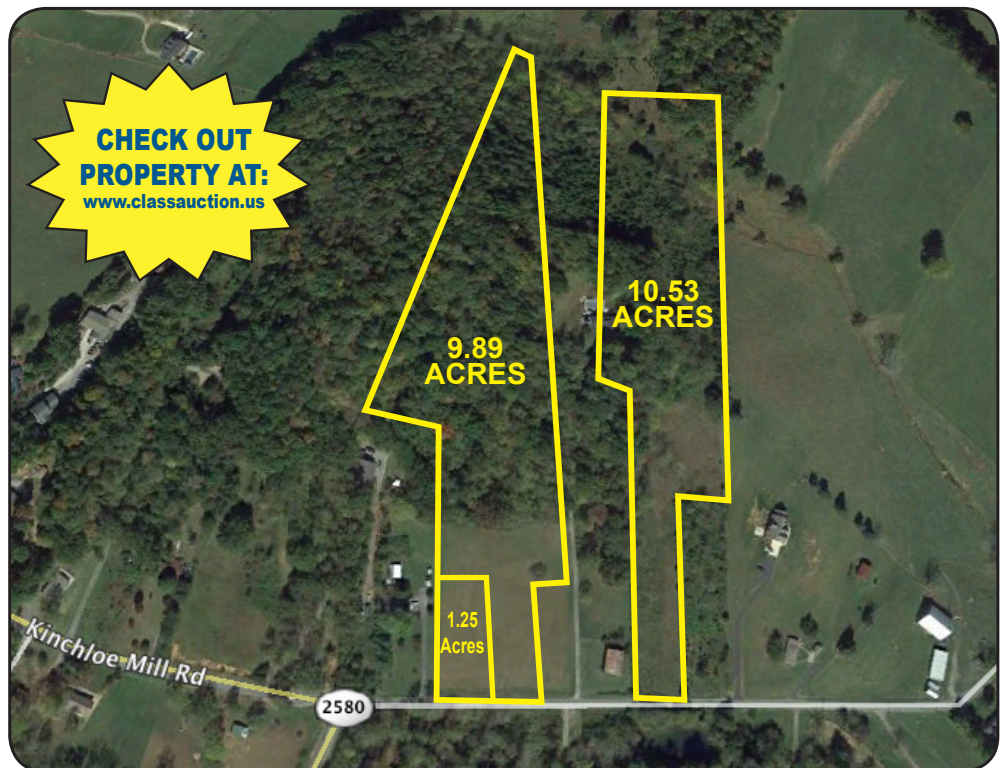
Located: In the 13th Civil District of Washington County on Kinchloe Mill Road

Directions: From Interstate 26, take Eastern Star Exit, go south 1.4 miles, turn left onto Kinchloe Mill Rd., go 5 tenths mile to sale on left.

Property: Land consist of 21.67 acres being offered in tracts and as a whole. Some cleared and some wooded.

Water: Utility water available for all tracts. Creek runs through larger tracts.

Terms: 10% Deposit on sale day with balance due within 30 days.



AUCTION NOTE: LOCATION, LOCATION, LOCATION...this property is in an excellent location, convenient to Kingsport, Johnson City, Jonesborough, and all the Tri-Cities just off the Eastern Star exit of I-26.

SALE BEING CONDUCTED FOR JAMES FROSLEY BY:

C.L.A.S.S.

CLASSIC LAND & AUCTION SERVICE SPECIALISTS

140 W. Bernard Ave., Suite 1 • Greeneville, TN 37743 • Phone (423) 639-0881 • Firm #351

Check out property on our website: www.classauction.us

Announcements day of sale take precedence over all printed material.